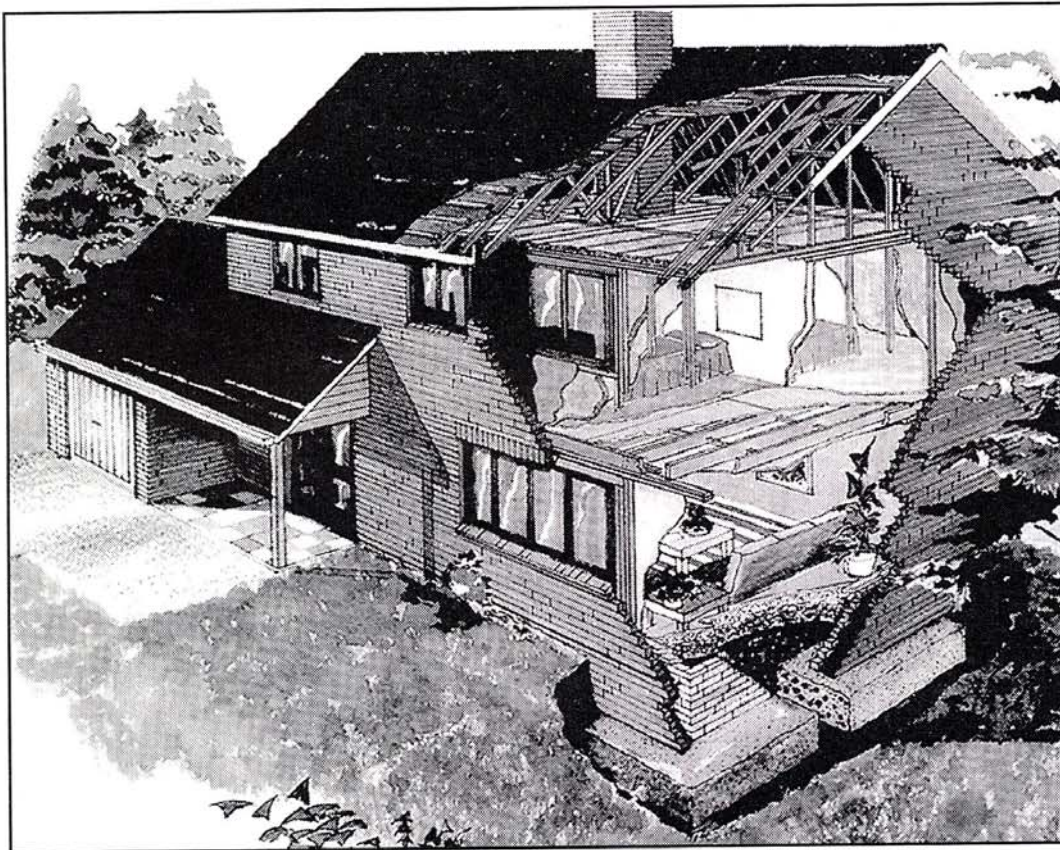




*Wood is used in nearly all modern buildings. It is very important and is used in a wide variety of ways.*

*Different words are used to describe different parts of the house where wood is used.*

**Look at the diagram of a house below and at the descriptions underneath. Try to pair these descriptions.**



DOORFRAME

DOOR

DORMERS

BATTEN

WINDOW

JOIST

WALL-PLATE

RAFTER

COLLARBEAM

WINDOW  
FRAME

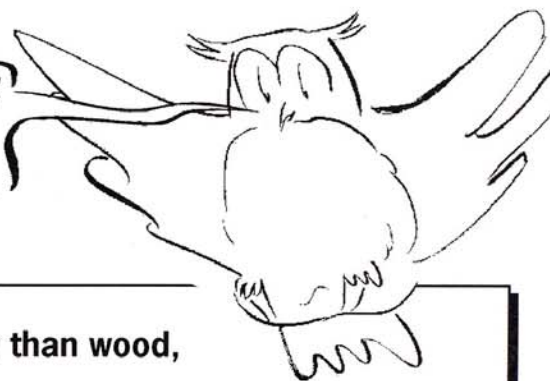
MULLION

LINTEL

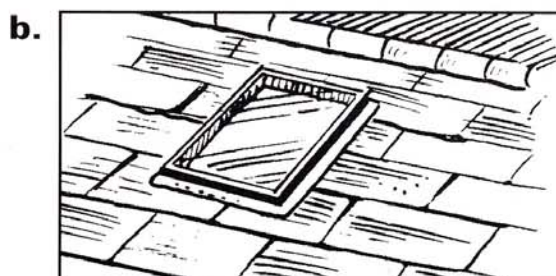
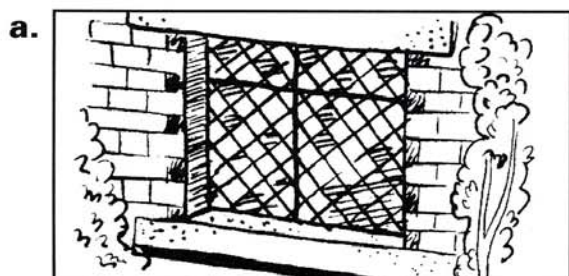
	Strips of wood nailed to the rafters. The tiles or slates are nailed to the battens.
	A window built out from a sloping roof. Most attic rooms have dormer windows.
	A strong wooden beam laid along the top walls of the house. The joists and rafters rest on the wall-plates.
	Entrance/exit into/out of the house.
	The beam placed across the top of the window to support the weight of the wall.
	A wooden beam laid across from one wall to another. The floor boards are laid over the joists.
	A structure to support the window.
	Beam between the rafters.
	A structure to support the door.
	A sloping beam making part of the framework of the roof. The battens are attached to this.
	An opening in the wall to let in light.
	A vertical bar dividing lights in the window.



*Some people prefer using wood in their house but others would rather use other materials. There are many alternative materials that can be used.*



1. Window frames are often made of materials other than wood, for example plastic or metal.



For each picture write which material you think has been used and what advantages you think it might have:

a. **Material used:**

**Advantages:**

b. **Material used:**

**Advantages:**

2. Make a list of other things in your house where wood used to be used but another material is used now.

EXAMPLE:

ITEM	MATERIAL
DOOR	

Compare your list with a partner and discuss why the different materials have been used.